

SKYCOM VCCS BY INTELCAN V8000



The **SKYCOM VCCS**, consists of a voice communications switch, one or more touch-screen operator positions, and workstations that provide extensive supervisory, administrative, and technical control over the entire system.

Voice Communication Switch

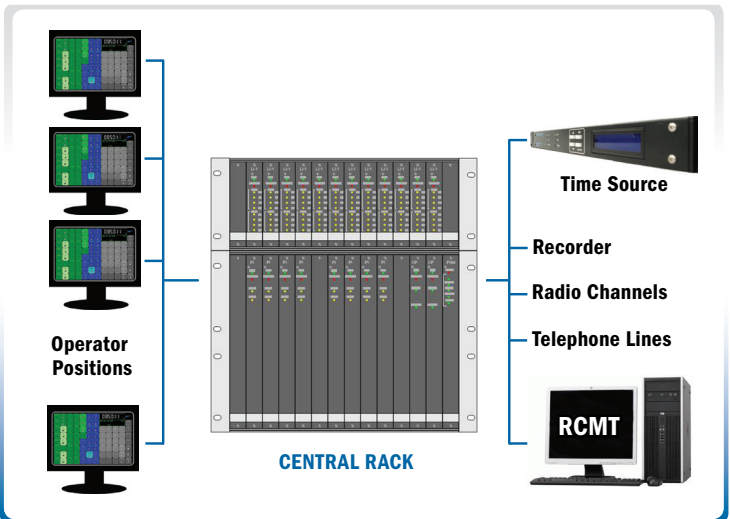
SKYCOM VCCS V8000 voice switch allows the Operator to communicate over air-to-ground (A/G) radio channels and over ground-to-ground (G/G) line-based circuits. A multitude of features enhances and augments these basic communication operations. Its distributed architecture, on-line system monitoring, and reconfiguration are integrated to provide the highest levels of reliability, functionality, and flexibility attainable.

The voice communications switch routes audio between the audio (radio and landline) resources and the operators. The switch cabinet containing all the required switching components is known as the Central Equipment (CE).

The VCCS combines radio and telephone functions with the use of a modern touch screen panel (TSP). The TSP is available in two options, a standard display and a sunlight readable display. The sunlight readable display is software adjustable which enables applications in environments with both high and low ambient lighting.

The system operates with internal or external time synchronization.

The SKYCOM V8000 can be customized to assimilate additional control and supervision functions. For example: monitoring the operational state of various navigational aids, display of meteorological sensor data, and so on.



General Characteristics

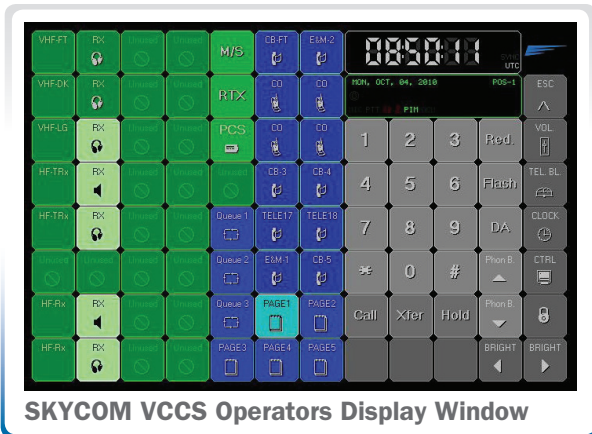
General characteristics of the system include:

- All Central equipment modules are provided in distributed and redundant architecture.
- Easy configuration, supervision, maintenance, and administration with SKYCOM RCMT
- Touch Screen Panel (TSP) for Operator Position.
- Centralized Time allows to work with or without external synchronization achieved via NTP or serial port.
- Recording output for each channel and each operator position.
- Supply voltage of 90-230VAC or 24VDC

Central Equipment

The Central Equipment Cabinet includes:

- **CSPU** – Central Switching Processing Unit that consists of position and line interface modules as well as modules enabling local and remote control and monitoring of the system
- **CLIU** – Central Line Interface Unit consists of the number of line interface cards as required by the corresponding system specification
- **CPSU** – Central Power Supply Unit that is connected to the AC Mains and/or a +24VDC source. The CSPU provides outputs of +15VDC, -15VDC, +5VDC, -48VDC in redundant configuration.





Position Configuration window

Operator Position Equipment

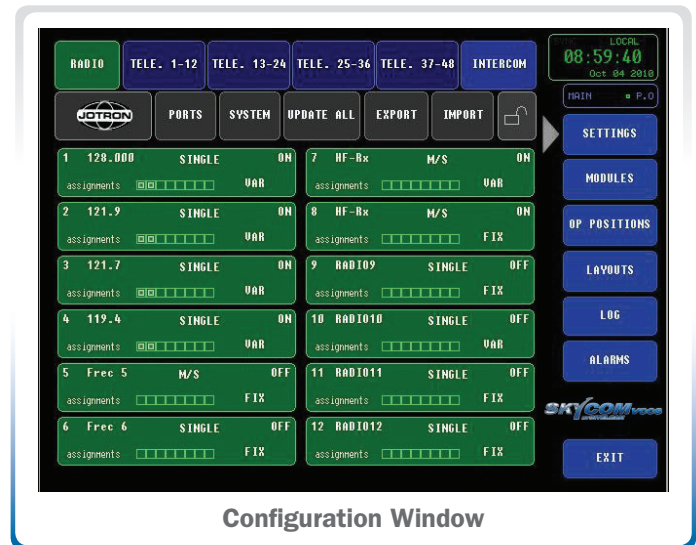
- **TSP** - Touch Screen Panel connected to a PC for the Operator to use the system.
- **OCU** - Operator Control Unit connected to the Position Interface Module on CSPU to allow all data and audio interface with the Operator.
- Additional devices (such as jack panel, speaker, footswitch) to connect audio accessories and PTT control.

SKYCOM Remote Control and Monitoring Terminal (RCMT)

The SKYCOM Remote Control and Monitoring Terminal (RCMT) equipped with Windows XP or higher and has the following applications: configuration, supervision, maintenance, and administration.

System capabilities

- 16 Operator Positions configured with non-redundant architecture or 8 Operator Positions configured with fully redundant architecture
- 48 Radio/Telephone ports configurable as 48 ports with non-redundant architecture or 24 ports with redundant architecture
- The desired number of radio and telephone ports, as well as the number of redundant and non-redundant ports are configurable from SKYCOM RCMT
- Live cards can be configured as:
 - Radio interface
 - 2/4 wire E&M Telephone interface
 - FXS/FXO Telephone interface
 - Ring-In/Ring-Out Telephone interface
 - Other Telephone interface available upon request
- Any port can be configured as a Hot Line
- All radio ports are capable of radio retransmission



Configuration Window

About Intelcan Technosystems

Intelcan is the leading Canadian communications, navigation, surveillance and air traffic management (CNS/ATM) system and airport infrastructure solution provider. Integrating Intelcan's own products or utilizing products from a diverse supplier network, Intelcan has delivered complete turnkey solutions both cost-effective and flexible, to fulfill civil and military clients' requirements in over 60 countries, worldwide.