

## SKYREMOTE RCMS BY INTELCAN

### SKYREMOTE RCMS (Remote Control

**Monitoring System), Intelcan's third generation RCMS, provides users with full control and monitoring capability of all of their mission critical systems.**

**SKYREMOTE has an integrated data acquisition and control system that expands the functionality of previous generation products. SKYREMOTE RCMS has flexible network configurations, allowing multiple sites to be monitored from multiple locations.**

SKYREMOTE is comprised of flexible Acquisition and Control Units (ACUs) that collect data from the systems and sensors and Control Station software, which displays the ACU information. The minimum configuration for SKYREMOTE consists of a COTS PC for the Control Station, at least one ACU at each site to be monitored and a network connection between the sites and the Control Station.

The Control Station displays data collected from each ACU and when an event occurs there are visual and audible alarms which identify the situation. All events are tracked and time stamped using SQL-based databases. Enhanced security is implemented using multiple password-protected access levels with varying restrictions and privileges. The Control Station can replicate functions of systems connected to the ACUs so that operators can change parameters, perform diagnostics and control these systems as though they were at the remote site.

The ACUs are located at various system sites and connected across standard networks to multiple Control Stations. Each ACU can monitor discrete signals such as door contacts, analogue signals such as temperature gauges and control almost any system.

### SKYREMOTE RCMS Features

#### Remote Control:

- Control customized for each system
- Control can retain system appearance

#### Monitor and Digital Inputs:

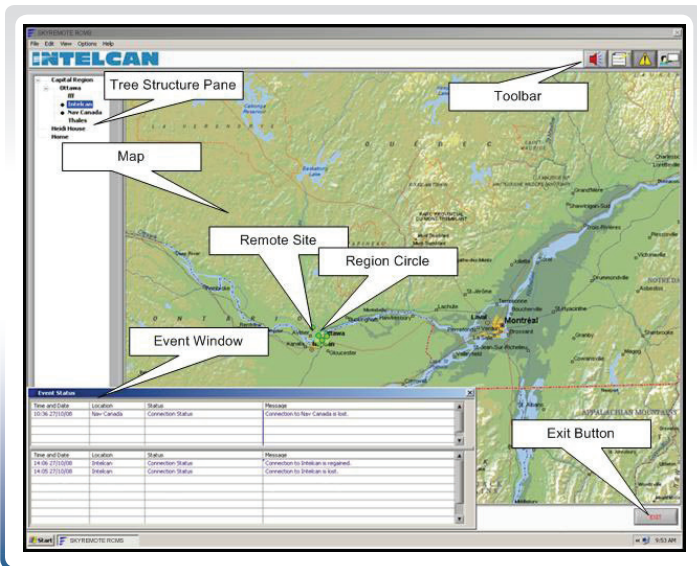
- Open/closed contacts
- Various alarm triggers possible

#### Monitor-Analog Inputs:

- Various display methods
- Various alarm triggers possible

#### Alarm Event:

- Items flash in red
- Flashing will continue until event acknowledged



### About Intelcan Technosystems

Intelcan is the leading Canadian communications, navigation, surveillance and air traffic management (CNS/ATM) system and airport infrastructure solution provider. Integrating Intelcan's own products or utilizing products from a diverse supplier network, Intelcan has delivered complete turnkey solutions both cost-effective and flexible, to fulfill civil and military clients' requirements in over 60 countries, worldwide.